

## The Kirklees Joint Strategic Assessment

# An overview for:

## Health and Adult Social Care Scrutiny Panel

12 December 2017

**Helen Bewsher**

# KJSA Section Progress



Key			
Completed or reviewed in past 24 Months	Due for review	To be completed	In Development

Section Title	Date Complete	Status
Assets overview	30/04/2016	Green
Batley and Spen summary <sup>1, 2</sup>	30/04/2016	Green
Victims of child sexual exploitation	30/04/2016	Green
Kirklees Overview	30/04/2016	Green
Inequalities overview	30/06/2016	Green
Poverty	30/06/2016	Green
Domestic abuse	30/06/2016	Green
Carers <sup>1,2</sup>	31/08/2016	Green
Safeguarding children and adults	31/08/2016	Green
Mental health and emotional wellbeing <sup>1, 2</sup>	30/09/2016	Green
Population summary	31/10/2016	Green
Dying & Bereavement	30/11/2016	Green
Former members of armed forces	30/11/2016	Green
Dementia (to link to DNA)	30/11/2016	Green
Huddersfield summary <sup>1, 2</sup>	28/02/2017	Green
Dewsbury & Mirfield summary <sup>1, 2</sup>	28/02/2017	Green
Kirklees Rural summary <sup>1, 2</sup>	28/02/2017	Green
Sexual health <sup>2</sup> and teenage pregnancy	28/02/2017	Green
Pregnancy & maternal health <sup>1</sup>	28/02/2017	Green
Community cohesion <sup>1,2</sup>	31/03/2017	Green

Section Title	Date Complete	Status
Offenders	30/04/2017	Green
Vulnerable children	30/06/2017	Green
Children with SEND	30/06/2017	Green
People helping people	31/08/2017	Green
Kirklees Overview	30/09/2017	Green
Joint CCG summary <sup>1, 2</sup>	In Development	Blue
Refugees and asylum seekers	In Development	Blue
Learning, skills and work	In Development	Blue
Crime and community safety	In Development	Blue
Food, Obesity, Physical Activity <sup>1, 2</sup>	In Development	Blue
Ageing Well (DPH Annual Report 2017)	In Development	Blue
Diabetes <sup>1</sup>	To Do	Amber
Disabled people (incl autism spectrum condition)	To Do	Amber
Cancer <sup>1</sup>	To Do	Amber
Transport	To Do	Amber
Infectious disease and HIV	To Do	Amber
Tobacco, Alcohol, Drug Misuse <sup>1, 2</sup>	To Do	Amber
Asthma <sup>1</sup> & COPD <sup>1</sup> , CVD <sup>1</sup> , CKD and liver disease	To Do	Amber
Parenting & family support?	To Do	Amber
Other wider factors (tbc)	To Do	Amber
Chronic pain <sup>1</sup>	To Do	Amber

Find the KJSA here: <http://observatory.kirklees.gov.uk/jsna>

Home Wider factors Behaviours People and life events Conditions

## Summaries

- KJSA blog
- Kirklees overview
- Population
- Batley and Spenningsdale
- Dewsbury and Mirfield
- Huddersfield
- Kirklees Rural
- North Kirklees CCG
- Greater Huddersfield CCG

## Inequalities

- Inequalities overview

## Resources / other information

- Resources overview
- Previous JSNAs

## Assets

- People helping people

## What's new

- What's new

# Kirklees Joint Strategic Assessment

Local authorities and clinical commissioning groups (CCGs) have to develop Joint Strategic Needs Assessments (JSNAs) and Joint Health and Wellbeing Strategies (JHWSs), on behalf of the Health and Wellbeing Board.

Our new KJSA provides a picture of the health and wellbeing of Kirklees people and is used to inform the commissioning strategies and plans of the council, Greater Huddersfield CCG, North Kirklees CCG and the local voluntary and community sector.

It includes information about health needs and assets. Health assets help people and communities to maintain and sustain their health and well-being, such as skills, knowledge, their networks and connections and community spaces, for example parks.

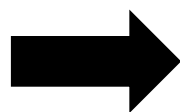
## How to use this information

The KJSA site is split up into sections. Each section under the four main headings uses a life course approach to explain who is affected and where and outlines what actions commissioners and service planners can consider.

- **Wider factors** explores home, community and economic factors.
- **Behaviours** explores health behaviours.
- **People and life events** explores specific groups and life transitions.
- **Conditions** explores common health conditions and diseases.

Useful summaries, supporting information and resources can be found via the links in the grey box.

The animation below shows in more detail how to access the information on this web site.



**Life-course approach**

**Links between sections and external resources**

**Visual and dynamic elements**

**Easy navigation via intuitive menus**

**Supports collaborative and agile working**

Home

### Summaries

- KJSA blog
- Kirklees overview
- Population
- Batley and Spenningsdale
- Dewsbury and Mirfield
- Huddersfield
- Kirklees Rural
- North Kirklees CCG
- Greater Huddersfield CCG

### Inequalities

Inequalities overview

### Resources / other information

- Resources overview
- Previous JSNAs

### Assets

People helping people

### What's new

What's new

Wider factors

Wider factors

Home and community factors >

Economic and environmental factors >

Local authorities

Needs Assessment

the Health and Wellbeing

Our new KJSA process

to inform the commissioning

CCG, North Kirklees CCG and the local voluntary and community organisations

It includes information about health needs and aspirations of communities to maintain and sustain their health and wellbeing, their knowledge, their networks and connections and community assets.

## How to use this information

The KJSA site is split up into sections. Each section uses a course approach to explain who is affected and why. This information can be considered by commissioners and service planners to consider the needs of the population.

- **Wider factors** explores home, community and environmental factors.
- **Behaviours** explores health behaviours.
- **People and life events** explores specific groups and life transitions.
- **Conditions** explores common health conditions and diseases.

Useful summaries, supporting information and resources can be found via the links in the grey box.

Behaviours

Behaviours

Food, obesity, physical activity

Sexual health

Teenage pregnancy

Tobacco, alcohol, drug misuse and transport

Other factors

People and life events

Life transitions >

Carers >

Children with Special Educational Needs and Disabilities (SEND)

Disabled people

Former members of armed forces

Healthy ageing (incl retirement)

Offenders

Parenting and family breakdown

Safeguarding children and adults

Victims of child sexual exploitation

Vulnerable children

Conditions

Asthma and COPD

Autistic spectrum condition

Cancer

Cardiovascular disease

Chronic kidney disease

Dementia

Diabetes

Infectious disease and HIV

Liver disease

Mental health and emotional wellbeing

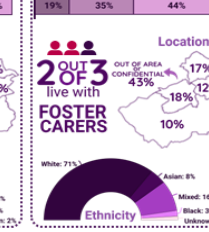
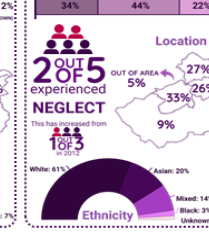
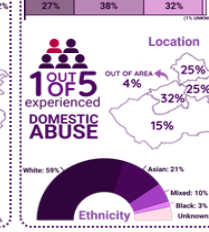
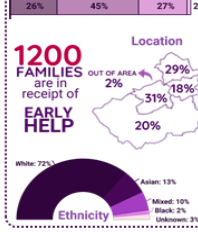
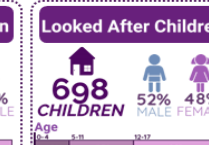
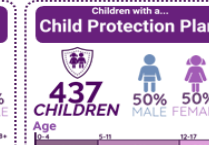
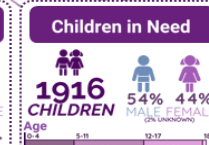
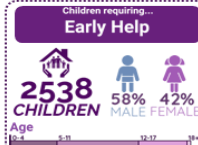
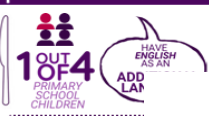
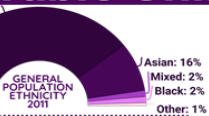
Neurological conditions

Pain

# Vulnerable Children

April 2016 - March 2017

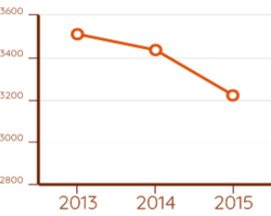
There are around **95,542** UNDER-18s in Kirklees



## In Kirklees...

Only 47% of young people knew where to get condoms...

The number of new STIs has decreased since 2013...



## KEEPING SEXUALLY HEALTHY...

Anyone who is sexually active should be screened for chlamydia annually and on change of sexual partner.

Men who have sex with men should be tested annually for HIV...



A regular, reliable method of contraception should be established prior to engaging in sexual relationships.

The HIV prevalence rate is lower than nationally.

CHLAMYDIA TESTED FOR NEW STI INFECTIONS IN 2015

1/2 Kirklees JSNA

## Animated guide to using the Kirklees Joint Strategic Assessment (KJSA) site

Kirklees COUNCIL

NHS Greater Huddersfield Clinical Commissioning Group

NHS North Kirklees Clinical Commissioning Group

MORE VIDEOS

0:01 / 1:02

YouTube

# Indicator tables coming soon...



## Indicator Table

Welcome to the KJSA indicator page. This page provides Kirklees level data for a variety of key indicators. For more information please click the 'How to guide' button.

**Information**

Name Behaviours - Physically Active (% Adults)  
 Definition The proportion of people who achieve minimum recommended amount of physical activity  
 Numerator The proportion of people who carry out 30 minutes or more of at least moderate activity five times a week  
 Denominator Total number of respondents

How to guide | Data Download | Data |

**Key**

**Comparison**

- Significantly better than Kirklees
- No significant difference from Kirklees
- Significantly worse than Kirklees

Kirklees value  
 Kirklees confidence interval  
 Indicator confidence interval

**Trend**

- Significant improvement
- Slight improvement
- No change
- Slightly worse
- Significantly worse

**Indicator**

Asset  
 Joint Health & Wellbeing Strategy

Expand/Collapse List		Indicator Table				
Indicator	Value	Lower Confidence Interval	Upper Confidence Interval	Kirklees	Trend	
<b>Wider Factors - Confidence Managing Money (% Adults)</b>						
Money Confidence - Male (2016)	87	84	90	87	none	
Money Confidence - Female (2016)	88	85	91	87	none	
Money Confidence - Age 18-44 (2016)	83	80	86	87	none	
<b>Behaviours - Physically Active (% Adults)</b>						
Physically Active - Male (2016)	39	37	41	37	no change	
Physically Active - Female (2016)	35	33	37	37	no change	
Physically Active - Age 18-44 (2016)	35	33	37	37	no change	
Physically Active - Age 45-64 (2016)	38	36	40	37	no change	
Physically Active - Age 65+ (2016)	40	37	43	37	no change	
Physically Active - Ethnicity All BME (2016)	31	28	34	37	worse	
Physically Active - Ethnicity White (2016)	38	37	40	37	no change	
Physically Active - Ethnicity Black (2016)	42	33	53	37	improvement	
Physically Active - Ethnicity Mixed (2016)	20	13	30	37	worse	

Approximately half of all the indicators will be 'asset' indicators

# Moving to an asset approach

## Moving from JSNA to JSA

- An iterative, ongoing process
  - Focuses equally on needs and assets
  - Outlines medium and longer-term challenges for district
- 

## What is an asset?

- Things that help people and communities to maintain and sustain their health and well-being, including:  
Skills | Capacity | Knowledge | Networks and connections | Effectiveness of groups and organisations | Local physical and economic resources (such as green spaces and local businesses)
- 

## An asset approach starts by reflecting on what is already present:

- What makes us strong/ healthy/ able to cope in times of stress?
- What makes this a good place to be? What does the community do to improve health?

# Kirklees Joint Strategic Assessment Blog

## Vulnerable Children in Kirklees

JULY 24, 2017 ~ [LEAVE A COMMENT](#)

The newly updated vulnerable children section in the KJSA is a really important part of the commissioning cycle for this group of children. It describes the wide range of problems this group faces which helps us think more broadly as commissioners about how we support vulnerable children and their families. The KJSA chapter also provides really useful insights and intelligence about specific cohorts of children within our vulnerable population, such as levels of emotional wellbeing amongst our local looked after population.

This newly updated section is an es

The KJSA site is split up into sections. Each takes a different course approach to explain who is affected and how commissioners and service planners can

- **Wider factors** explores home, community and environment
- **Behaviours** explores health behaviours and mental health
- **People and life events** explores specific life events
- **Conditions** explores common health conditions

Useful summaries, supporting information and a grey box.

### Recent Posts

[Vulnerable Children in Kirklees](#)

[KJSA showcased at national conferences](#)

[Teenage pregnancy](#)

[It's Carers Week!](#)

[Young carers](#)

### Summaries

[KJSA blog](#)

[Kirklees overview](#)

[Population](#)

[Batley and Spen](#)

[Dewsbury and Mirfield](#)

[Huddersfield](#)

[Kirklees Rural](#)

[North Kirklees CCG](#)

[Greater Huddersfield CCG](#)

### Inequalities

[Inequalities overview](#)

### Resources / other information

[Resources overview](#)

[Previous JSNAs](#)

### Assets

[People helping people](#)

### What's new

[What's new](#)

### Follow the KJSA blog via email






Enter your email address to follow the KJSA blog and receive notifications of new posts by email.

Join 23 other followers






FOLLOW



## Summary

-  Creative and unconventional user engagement
-  Effectively and memorably conveys key messages
-  Flexibility to update sections separately
-  Distributes burden of work
-  Supports intelligence-led commissioning for outcomes

## Success indicators

-  Just under **5000** KJSA website viewing 'sessions' and over **15,000** page views since Dec 2016
-  Over **2,200** users since Dec 2016 (55% returning & 45% new)
-  Anecdotal feedback and testimonials from guest bloggers highlight ease of use
-  Positively received by Health & Wellbeing Board
-  Received Highly Commended award: LARIA 2017

# Challenges/Learning



- Easier to engage some stakeholders than others
- Limited take-up of blog (to date)
- Time needed to update sections in new format
- Observatory may not be the best platform for the KJSA
- Updating schedule needs to be quite fluid...
  - We don't always get new data/ intelligence when we expect to
  - Sometimes political priorities take over
- How do we ensure that the KJSA is used to drive intelligence-led commissioning?
- How do we ensure that the KJSA helps us to understand health inequalities and what is changing?
- How do we communicate the links between the KJSA, the JHWS, the Local HWB Plan and the Kirklees outcomes?